

Key to the species of *Helconichia*
(Hymenoptera: Braconidae:
Ichneutinae)



Fig 1. *Helconichia reina*. A. Head, anterior view.
B. forewing

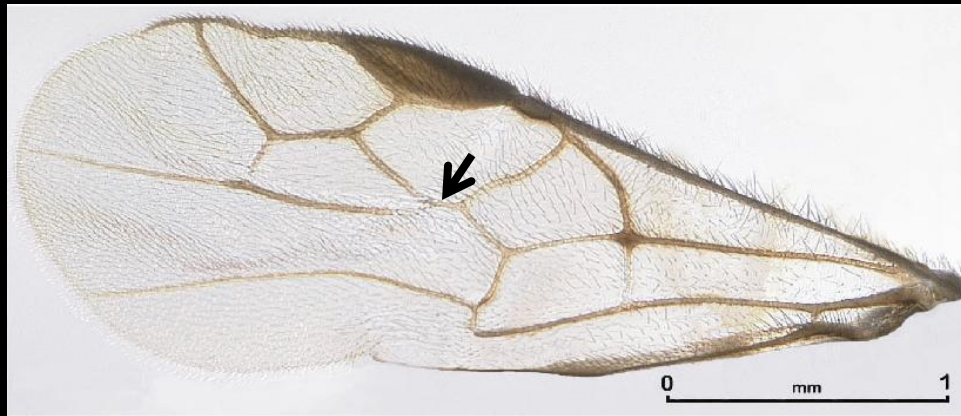


Fig 2. Forewing of *Helconichia trichiops*.

1	Inter-antennal carinae present (Fig. 1A, arrow); (RS+M)b of forewing absent (Fig. 1B)	<u>2</u>
1'	Inter-antennal carinae absent; (RS+M)b of forewing present (Fig. 2, arrow)	<u>3</u>

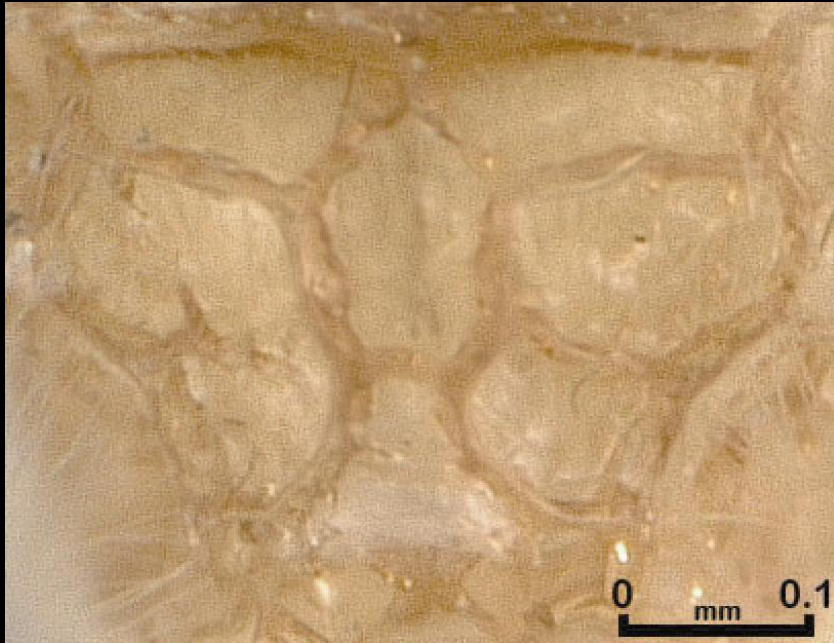


Fig 3. Propodeum of *Helconichia areolata*. dorsal view

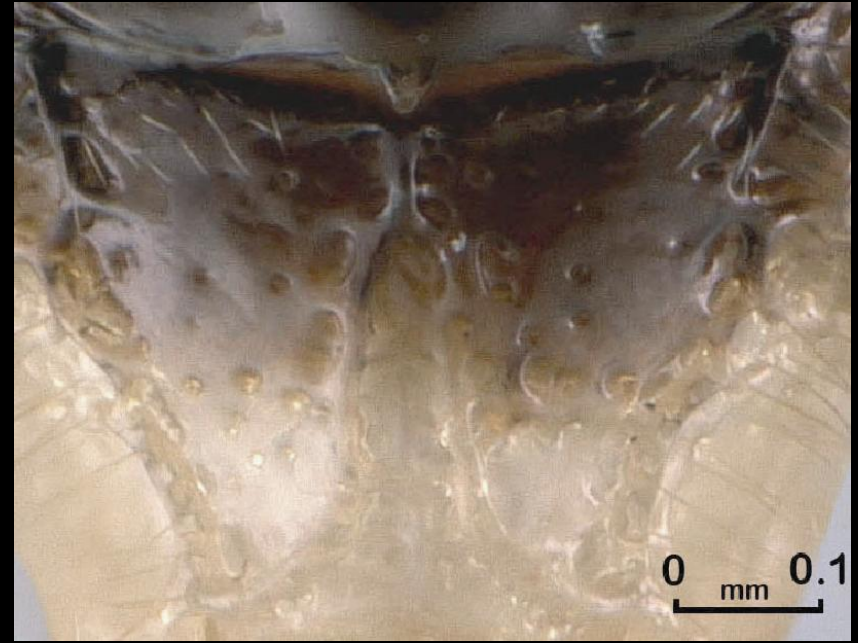


Fig 4. Propodeum of *Helconichia reina*, dorsal view

2	Propodeal areolet pentagonal, less than 2X longer than wide (Fig. 3).	<i>H.areolata</i> (Figure 10) Sharkey & Wharton, 1994
2'	Propodeal areolet not pentagonal, 2X longer than wide (Fig. 4)	<i>H.reina</i> (Figure 11) Sharanowski & Sharkey, 2007

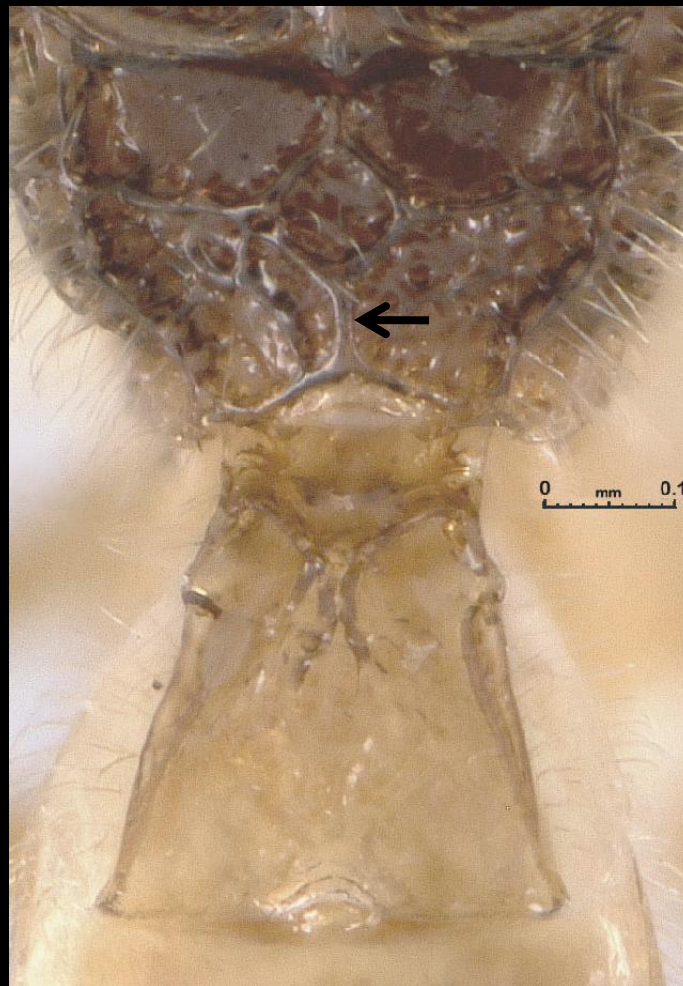


Fig. 5 Propodeum and first metasomal tergum of *H. trichopteryx*.

3	Posterior longitudinal median carina of propodeum present (Fig.5, arrow)	<u>4</u>
3'	Posterior longitudinal median carina of propodeum absent	<i>H.sarria</i> (Figure 12) Sharanowski & Sharkey, 2007

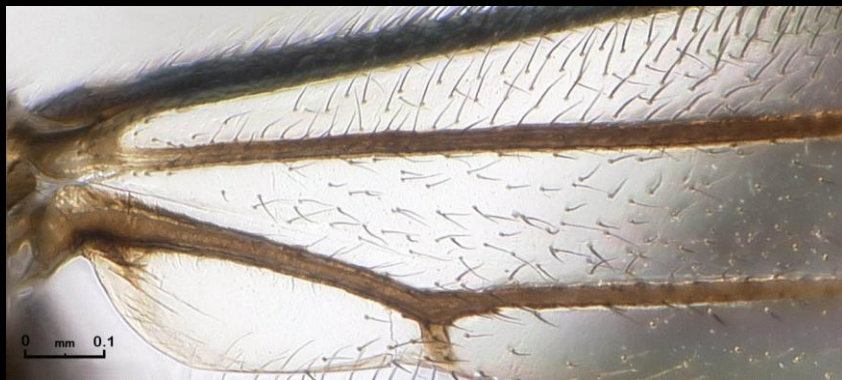


Fig. 6 Basal region of forewing of *Helconichia reina*



Fig. 7 Basal region of forewing of *H. sarria*

4	Anal region of forewing sparsely and irregularly setiferous (Fig. 6)	<i>H. trichiops</i> (Figure 13) Sharkey & Wharton, 1994
4'	Anal region of forewing uniformly setose (Fig. 7)	5



Fig 8. Lateral habitus of *Helconichia brenei*

Fig 9. Lateral habitus of *Helconichia trichopteryx*.
Inset is lateral view of head, pronotum, and mesopleuron.

5	Pronotum and mesoscutum orange (Fig. 8)	<i>H.brenei</i> Sharanowski & Sharkey, 2007
5'	Pronotum and mesoscutum melanic (Fig. 9)	<i>H.trichopteryx</i> Sharkey & Wharton, 1994



Fig 10. Lateral habitus of *Helconichia areolata*, Type specimen of *Helconichia*.



Fig 11. Lateral habitus of *Helconichia reina*



Fig 12. Lateral habitus of *Helconichia sarria*



Fig 13. Lateral habitus of *Helconichia trichiops*