

Key to the species of *Maxfischeria*

(Hymenoptera: Braconidae: Maxfischeriinae)

For original publication, see: Boring, Sharanowski, and Sharkey, 2011

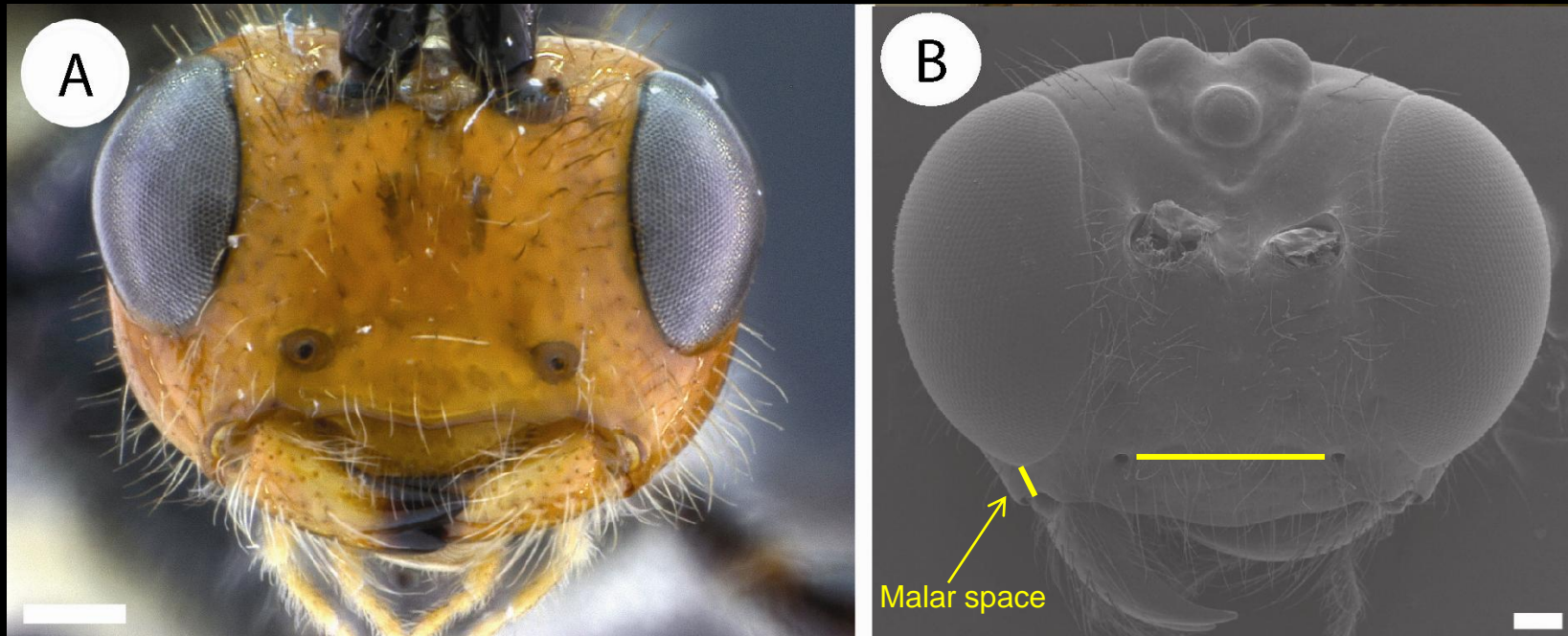


Fig 1. A. *Maxfischeria folkertsorum*, scale bar 0.5 mm; B. *Maxfischeria ovumancora*, scale bar 100 μ m

1	Length of malar space approximately one-half the length between the tentorial pits from anterior view (Fig. 1A)	<u>2</u>
1'	Length of malar space much less than one-half the length between the tentorial pits from anterior view (see yellow lines), (Fig.1B)	<u>3</u>



Fig 2 Metasoma of A: *Maxfischeria folkertsorum*, lateral view; B: *Maxfischeria anic*, dorsal view. Scale bar 1 mm

2	Metasomal median tergite 1 entirely black (Fig. 2A); Forewing vein r approximately three-quarters the length of forewing vein 3RSa (ratio $r/3RSa$ 0.76–0.78).	<i>M. folkertsorum</i> (Figure 6)
2'	Metasomal median tergite 1 white with black spot (Fig. 2B); Forewing vein r sub-equal to forewing vein 3RSa, (ratio $r/3RSa$ 0.88–0.93) (Figure 3)	5

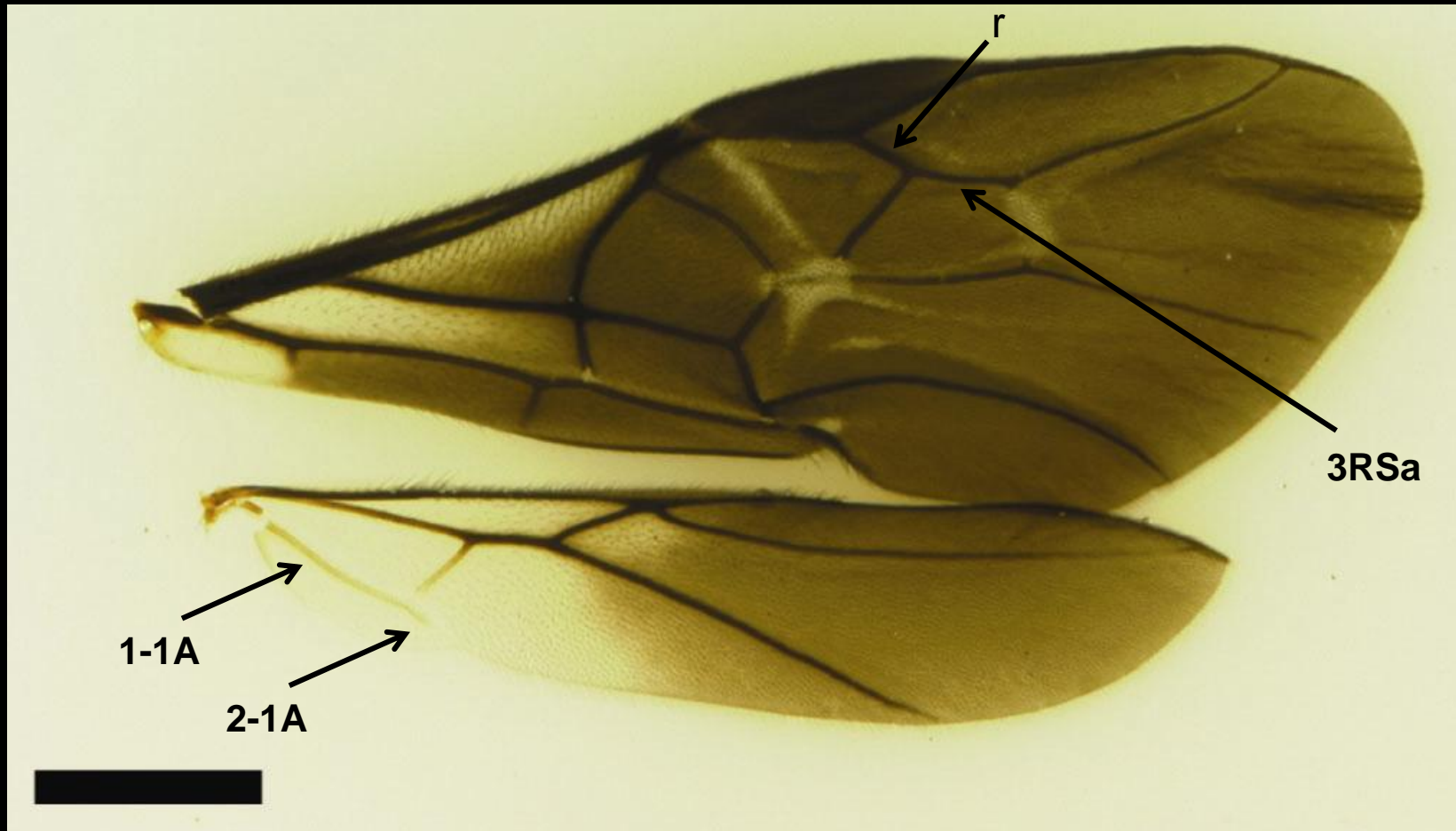


Fig. 3 Forewing and hindwing of *Maxfischeria ovumancora*, scale bar 0.5 mm

3	Hindwing vein 2–1A distinctly present and tubular (Fig. 5c)	<u>4</u>
3'	Hindwing vein 2–1A absent or occasionally present as an extremely small nub-like projection from 1–1A	<i>M. tricolor</i> (Figure 7)

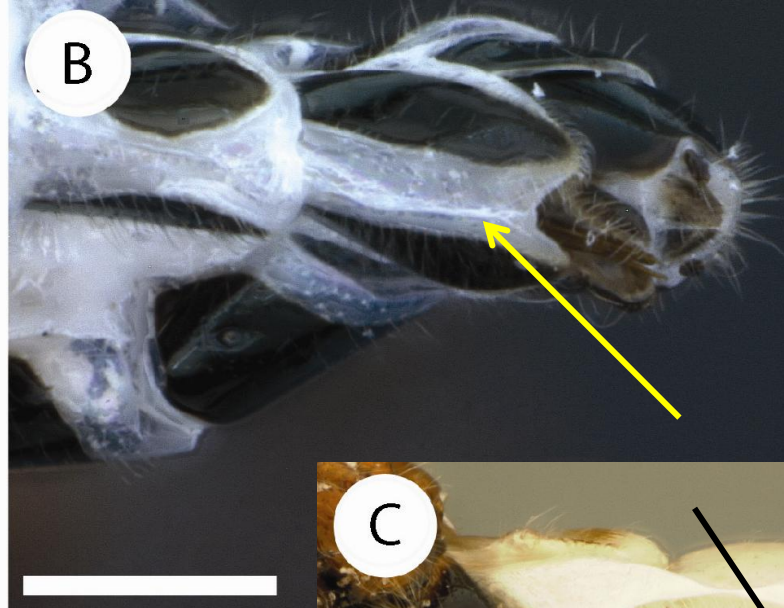
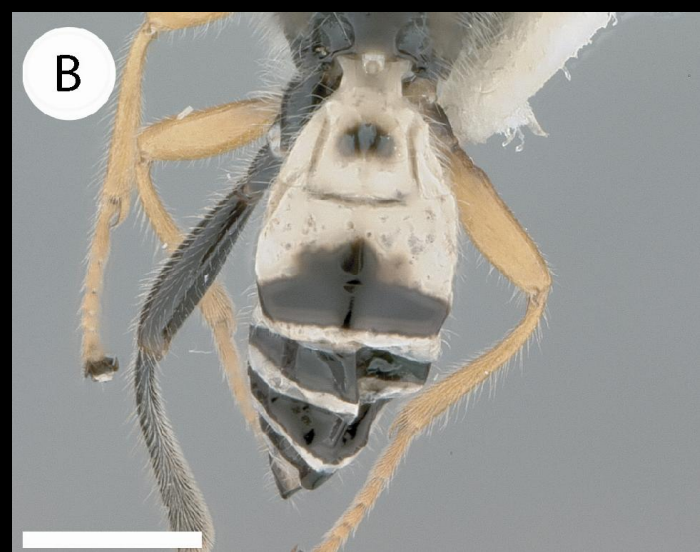


Fig. 4. A. *M. ovumancora* metasoma lateral view;
 B. *M. ovumancora* posterior metasoma ventral view;
 C. *M. ameliae* metasoma lateral view.
 Scale bar 0.5 mm

4	Metasoma lateral tergite 3 with a black sclerotized band (Fig.4A, arrow); hypopygium desclerotized medially from ventral view (Fig. 4B arrow); head and propodeum melanic to dark brown (Figure ?)	<i>M.ovumancora</i> (Figure 8)
4'	Metasoma lateral tergite 3 without a black sclerotized band (very rarely with a small black spot) (Fig. 4C); hypopygium entirely sclerotized; head yellow, propodeum orange-brown (Figure ?)	<i>M. ameliae</i> (Figure 9)



Fig 5. A-B. *Maxfischeria briggsi*;
C-D. *Maxfischeria anic*;
A and C. Metasoma, lateral view, scale bar 0.5mm;
B and D. Metasoma, dorsal view, scale bar 1 mm.



5	Hypopygium without pigmentation (Fig. 5A); metasomal tergite 2 mostly white (Fig. 5B).	<i>M. briggsi</i> (Figure 10)
5'	Hypopygium pigmented laterally (Fig. 5C), metasomal tergite 2 entirely black (Fig. 5D)	<i>M. anic</i> (Figure 11)



Fig 6. Lateral habitus of *Maxfischeria folkertsorum*, scale bar 0.5mm



Fig 7. Lateral habitus of *Maxfischeria tricolor*, scale bar 0.5mm

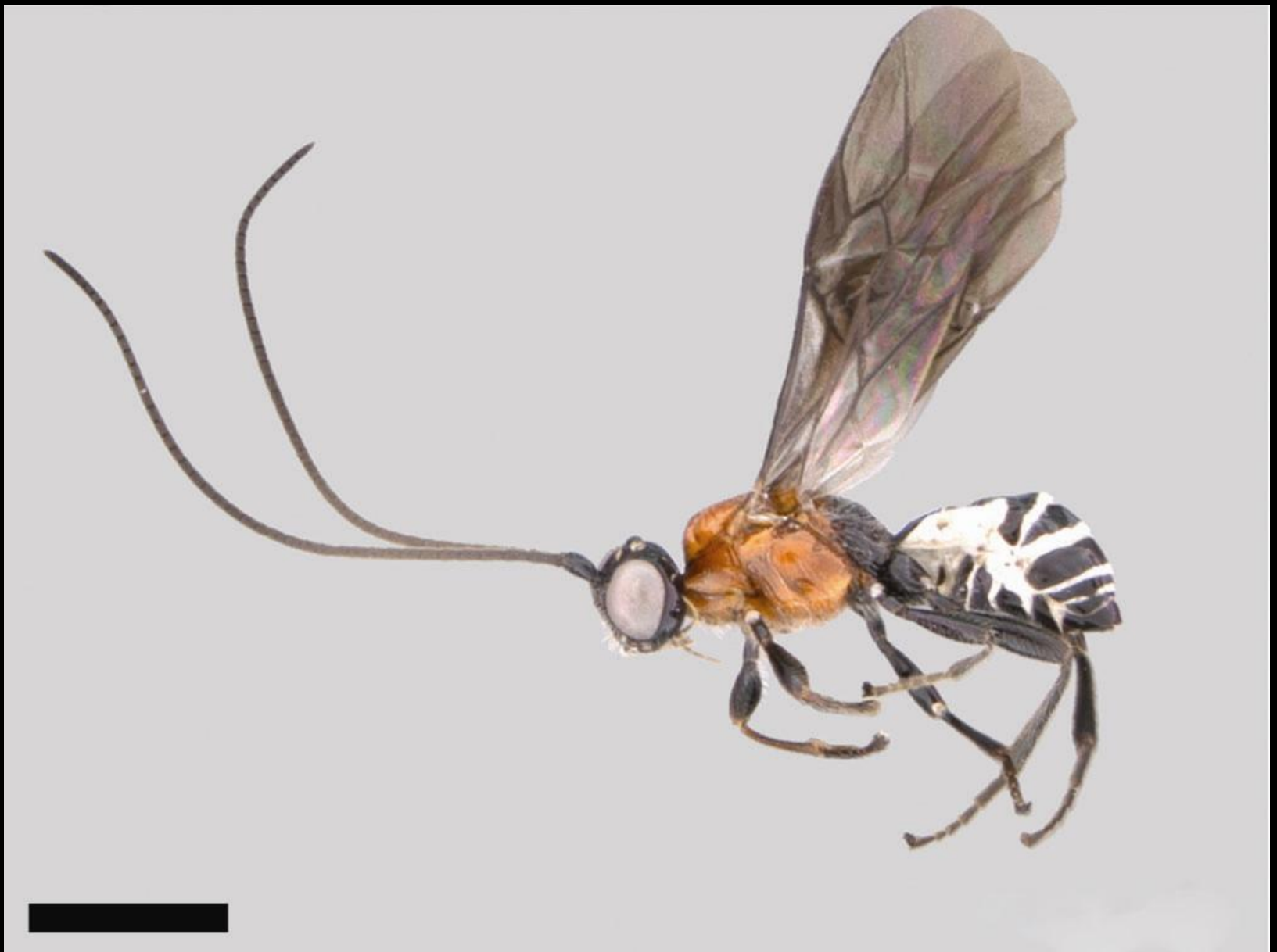


Fig 8. Lateral habitus of *Maxfischeria ovumancora*, scale bar 0.5mm



Fig 9. Lateral habitus of *Maxfischeria ameliae*, scale bar 0.5mm



Fig 10. Lateral habitus of *Maxfischeria briggsi*, scale bar 0.5mm



Fig 11. Lateral habitus of *Maxfischeria anic*, scale bar 0.5mm