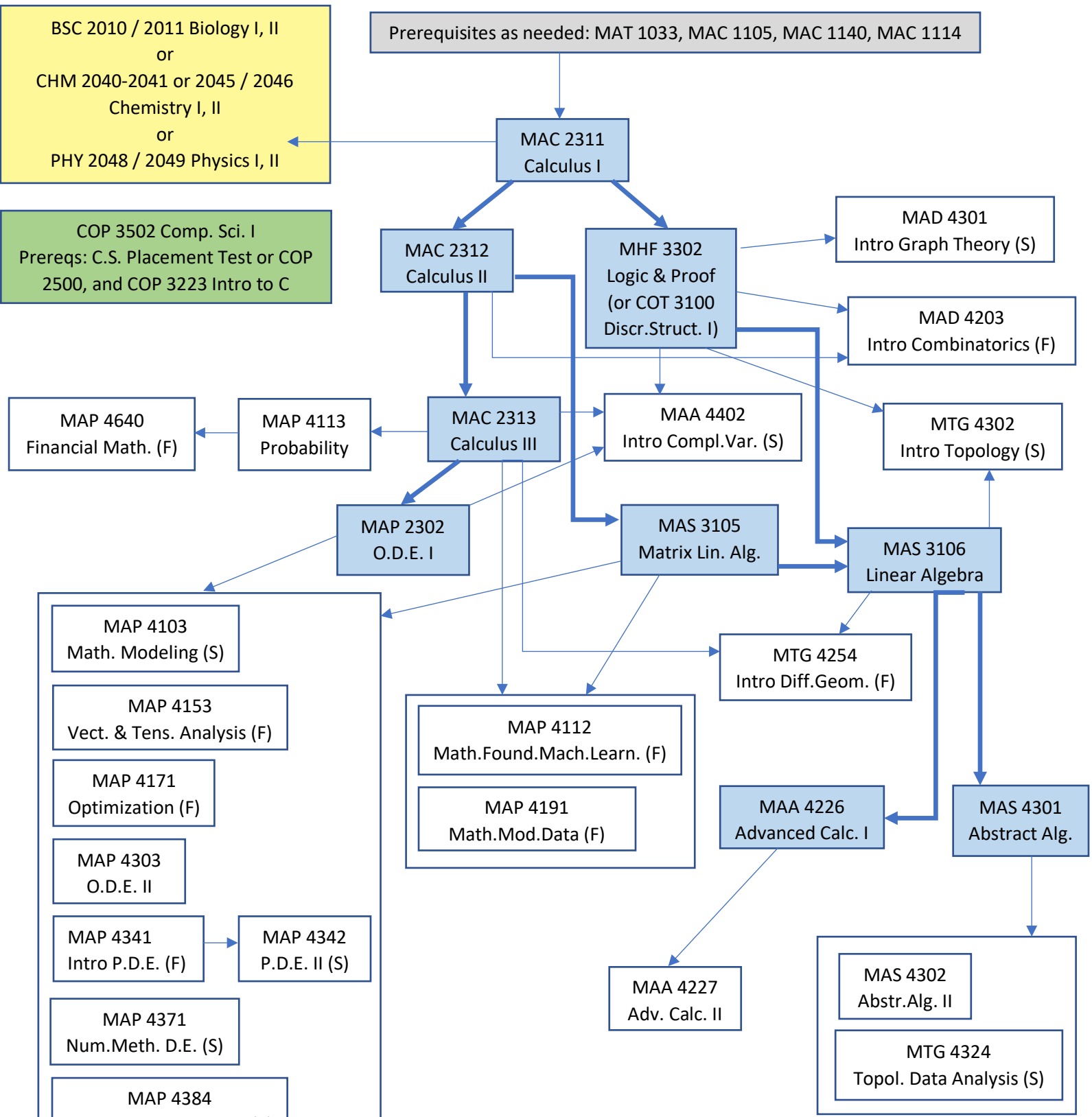


UCF MATHEMATICS UNDERGRADUATE COURSES FLOWCHART (updated 4/2022)



BSC 2010 / 2011 Biology I, II
or
CHM 2040-2041 or 2045 / 2046
Chemistry I, II
or
PHY 2048 / 2049 Physics I, II

Prerequisites as needed: MAT 1033, MAC 1105, MAC 1140, MAC 1114

COP 3502 Comp. Sci. I
Prereqs: C.S. Placement Test or COP
2500, and COP 3223 Intro to C

MAP 4640
Financial Math. (F)

MAP 4113
Probability

MAC 2312
Calculus II

MHF 3302
Logic & Proof
(or COT 3100
Discr.Struct. I)

MAD 4301
Intro Graph Theory (S)

MAD 4203
Intro Combinatorics (F)

MAC 2313
Calculus III

MAA 4402
Intro Compl.Var. (S)

MTG 4302
Intro Topology (S)

MAP 2302
O.D.E. I

MAS 3105
Matrix Lin. Alg.

MAS 3106
Linear Algebra

- MAP 4103
Math. Modeling (S)
- MAP 4153
Vect. & Tens. Analysis (F)
- MAP 4171
Optimization (F)
- MAP 4303
O.D.E. II
- MAP 4341
Intro P.D.E. (F)
- MAP 4342
P.D.E. II (S)
- MAP 4371
Num.Meth. D.E. (S)
- MAP 4384
Num.Meth. Comp.Sci. (F)
- MAP 4484
Math. Biology (F)
- MAP 4494
Math. Mod. Biology

MAP 4112
Math.Found.Mach.Learn. (F)

MAP 4191
Math.Mod.Data (F)

MTG 4254
Intro Diff.Geom. (F)

MAA 4226
Advanced Calc. I

MAS 4301
Abstract Alg.

MAA 4227
Adv. Calc. II

MAS 4302
Abstr.Alg. II

MTG 4324
Topol. Data Analysis (S)

NOTES

- Core course
- Elective
- Prerequisite

Students must take one science sequence and COP 3502.

Additional topics courses are occasionally offered.

Graduate courses can be substituted for electives.