

WELCOME TO THE FIRST PSI CHI GENERAL BODY MEETING OF FALL 2022!



Psi Chi: The International Honor Society of Psychology

INTRODUCTION OF OFFICERS



President

Sarah Ackerman

Treasurer

Sara Mitha

Vice President

Flora Ngo

Event Coordinator

Kathren Pavlov

Secretary

Alejandra Medina Fernandez

Historian

Selin Yildirgan



Sarah Ackerman-President



Grade Level: **Senior**

Psychology Track: **Clinical**

Favorite animal: **Dogs**

Hobbies: **Trying new food, traveling, and spending time outdoors**

What else am I involved in?

-Crisis Counselor for Crisis Text Line

- URA with the CJ Department

-Grief Counselor with New Hope for Kids Florida

Favorite song: **How to Save a Life by the Fray**

Favorite Quote: **Carpe Diem!**

Goal after graduation: Obtain either a master's degree in mental health counseling or a Psy.D and specialize in children and adolescents

Flora Ngo-Vice President



Grade Level: **Senior**

Psychology Track: **Clinical**

Favorite animal: **Bunnies, Cats, and Wolves**

What else am I involved in?

-Officer for Lambda Alpha Epsilon and Alpha Psi Sigma (Criminal Justice Orgs)

-Hearing Officer with SCAI

-Intern, Government Accountability Office

Current Hobbies: beach volleyball, music

Goal after graduation: Go abroad for a year after graduation then work as a federal special agent, especially with the Diplomatic Security Service

Alejandra Medina-Secretary

Grade Level: **Junior**

Psychology Track: **Clinical**

Hobbies: **Reading, working out and going to the beach**

What else am I involved in?

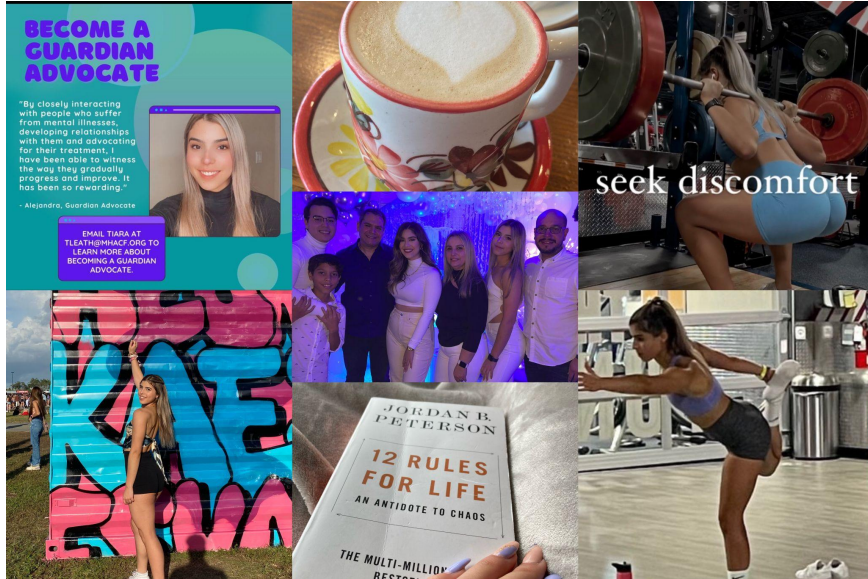
-Intern at Counseling Corner

-URA with the HEAL lab

-Honors Undergraduate Thesis Program

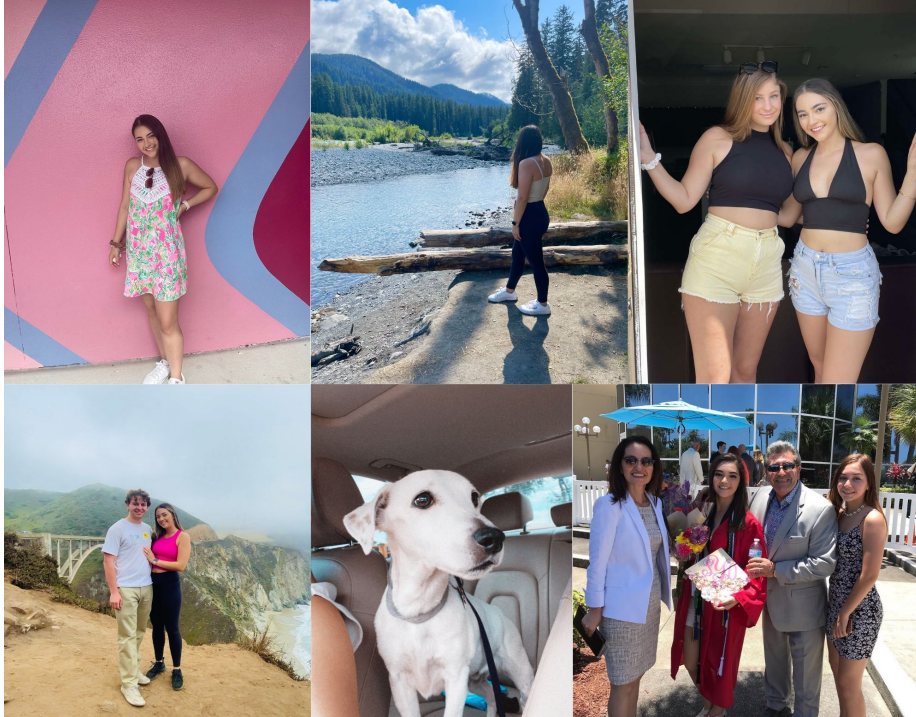
-TA for Statistical Methods in Psychology

Goal after graduation: **Apply to a PhD program in Clinical Health Psychology to focus my research on the relationship between lifestyle habits (e.g., exercise, nutrition) and mental health.**



Follow my fitness ig account: [@alemedinafit](https://www.instagram.com/alemedinafit)

Selin Yildirgan-Historian



Grade Level: **Senior**

Psychology Track: **Clinical**

What else am I involved in?

- **Research Assistant at the UCF PLAY Lab**
- **Undergraduate TA for Social Psychology**
- **Volunteer at Orange County Public Schools**

Favorite Hobbies: **Going Thrifting, Cycling, and all things Disney**

Interesting fact about me: **I'm Bilingual in English and Turkish**

Goal after graduation: **Obtain my Educational Specialist degree in School Psychology (EdS) and work primarily in public schools.**

Kathren Pavlov-Event Coordinator



Grade Level: Junior

Psychology Track: **Clinical**

Favorite animals: Dogs and foxes

What else am I involved in?

- **Research Assistant at UCF TAL Lab**
- **Research Assistant at UCF CDL Lab**
- **Student Health Advisory Committee**
- **Volunteer at the Center Orlando**

Favorite Hobbies: Going to the beach, exercising, and reading.

Goal after graduation: Apply for medical school to go into psychiatry or endocrinology to focus on hormonal imbalances and their effect on mental health

Sara Mitha - Treasurer

Grade Level: Senior

Psychology Track: **Clinical**

Favorite animals: Dolphin

What else am I involved in?

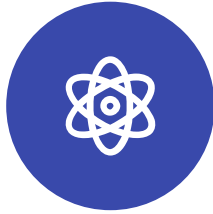
- **Health Services Administration Student Association**
- **ABA Alliance (Intake Specialist)**
- **UTA for Cognitive and Developmental Psychology**
- **UCF Swim**

Favorite Hobbies: Swimming, trying new foods, and watching soccer.

Goal after graduation: Apply for Masters in Health Administration (MHA). Create a platform or manage a clinical psychology clinic or hospital.



WHAT IS PSI CHI?



1.

Founded in 1929, Psi Chi is one of the largest honor societies in the United States.



2.

Psi Chi's mission is to foster excellence in the academia of all fields relevant to psychology and its scientific applications.



3.

Some notable members include B.F. Skinner and Philip Zimbardo.

PSI CHI BENEFITS

Lifetime membership is \$60. This membership includes, but not limited to:

- More than \$400,000 available in scholarships and grants that you will be able to apply for.
- Ability to be published in the official Psi Chi Journal of Psychological Research as well as other psychology journals.
- Attendance at regional and national conventions in showcasing research and developments in psychology.
- Networking opportunities with Psi Chi alumni.
- You can order and wear official Psi Chi graduation regala via the Psi Chi website to display your achievements as an honor student in Psychology.
- Psi Chi Career Center

ACCEPTANCE REQUIREMENTS



GPA REQUIREMENTS:

- SOPHOMORE (36-60 credit hours) → 3.604
- JUNIOR (61-90 credit hours) → 3.544
- SENIOR (91+ credit hours) → 3.579

ADDITIONAL REQUIREMENTS:

- Psychology Course GPA → 3.0
- 9 credit hours of Psychology coursework prior to applying
- 12 course credit hours at UCF

Meeting Information

- MEETINGS ARE NOT REQUIRED TO ATTEND
- Anyone interested in Psi Chi can attend our meetings.
- Our meetings are going to be held every other Monday (unless otherwise specified) from 6:30PM-7:20PM in the MSB (Math and Sciences Building) room #109.
- Meetings will be both in person and held on Zoom
- Zoom recordings and meeting slides will be posted on our website after each meeting
- If you would like to be caught up on the information you missed please come to our office hours. Sign up is on our website.

General Body Meeting Zoom Link

Join Zoom Meeting

<https://ucf.zoom.us/j/99752364619?pwd=QIN5NEFoQjVxaFFsMjV6cmJPeIc2Zz09>

Meeting ID: 997 5236 4619

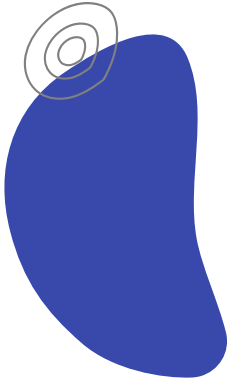
Passcode: PsiChi22

OFFICE HOURS



To request a meeting with one of our E-board members, we kindly ask that you fill out the attached google form below so we can reach out to you shortly!

https://docs.google.com/forms/d/1kX4vHWTdqdG5Ohhc4Qg8EcokAeRMReFk8DqZkD1erTM/viewform?edit_requester_d=true



Sarah Ackerman:

Available on Zoom Thursdays 8AM-12PM, In person Wednesdays 10AM-2PM

Flora Ngo:

Available on Zoom Fridays after 12PM, In person Monday/Wednesdays 8AM-11AM

Alejandra Medina:

Available on Zoom Tuesdays/Thursdays from 2PM-7PM, In person all day Mondays

Kathren Pavlov:

Available on Zoom Fridays 12PM-2PM, In person Thursdays 2PM-4PM

Selin Yildirgan:

Available on Zoom Tuesdays from 1PM-5PM, In person Thursdays from 1-5PM

Sara Mitha:

Available on Zoom on Wednesdays after 1PM, In person Wednesdays after 1PM



Who Can Apply to Psi Chi?

- Students who meet the minimum requirements for GPA and psychology coursework
- Be enrolled as a major or minor in a psychology program or a program that is psychological in nature
- Have completed at least 3 semesters or equivalent of full-time college coursework

When are Applications Opening?

- The Eboard will be deciding this coming Friday September 23rd when we will open our applications.
- We will most likely post our decision on Friday afternoon.

How to Apply?

- Apply on psichi.org
- Email ***ucfpsichi@gmail.com*** proof of your submitted application to the Psi Chi website by saving it as a .pdf or printing and scanning it as a .pdf.
- Email ***Matthew.Chin@ucf.edu*** a .pdf version of your UCF degree audit
- Pay a \$60 Psi Chi Organization fee on their website
- Pay a \$15 fee for the Local Chapter dues through UCF Psi Chi's Paypal
- Due to the current situation, Psi Chi will only be accepting payments via debit card for the lifetime membership fee.
- Once the materials listed above have been approved by a Psi Chi Officer, you will receive an email with a fee invoice.
- Once you pay UCF Psi Chi's local chapter dues through Paypal, we will send you an email from the Psi Chi Officers to confirm your application submission and acceptance into UCF's Psi Chi Chapter.

POINT SYSTEM

Become involved in Psi Chi!



5pts

MEETINGS

Join our meetings and sign in at the beginning of every meeting via Google Form to earn five points!

4pts

EVENTS

Attend any events (other than a social) that we host and sign in via Google Form to earn three points!

2pts

SOCIALS

Attend any social events that we host and sign in via Google Form to earn three points!



Psi Chi Fall 2022 Points Record



File Edit View Insert Format Data Tools Extensions Help [Last edit was 6 days ago](#)



100% | \$ % .0 .00 123 | Default (Ari... | 10 | **B** *I* ~~U~~ A | | |

A1 Date

	A	B	C	D	E	F	G
1	Date	Event Type (Meeting, Event, Social)	Points Awarded	Attendance Form Filled (Y or N)			
2							
3							
4							
5							
6							
7							
8							
9							
10							
11							
12							
13							
14							
15							
16							
17							
18							
19							
20							
21							

Newsletter

If you'd like to receive a monthly newsletter from Psi Chi which includes important dates, upcoming events, and Psi Chi related information please subscribe to our email list below! Starting in October!



Upcoming Events

Classes Are Not Enough: How to be Competitive for What's Next Virtual Meeting September 20th 2PM-3PM

UCF Grad Fair: September 21st 4PM-7PM Student Union

<https://graduate.ucf.edu/news/article/save-the-date-for-the-ucf-grad-fair-sept-21>

Just Be Mindfulness Event: September 21st 10AM Memory Mall

<https://events.ucf.edu/event/2532353/just-be-mindfulness-event/>

<https://events.ucf.edu/event/2562236/classes-are-not-enough-how-to-be-competitive-for-whats-next/>

UCF's Virtual Career Expo: September 29th 10AM-4PM

https://career.ucf.edu/career_expo_employers/

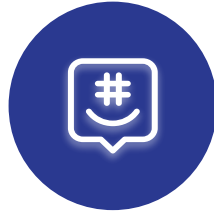
Psi Chi Tabling: September 30th 12PM-2PM Outside Psychology Building

THANK YOU FOR ATTENDING!

FOLLOW US FOR MORE UPDATES!

GroupMe

https://groupme.com/join_group/63986468/8ys78tOQ



Facebook

[@ucfpsichi](https://www.facebook.com/ucfpsichi)

Instagram

[@ucfpsichi](https://www.instagram.com/ucfpsichi)



Email

ucfpsichi@gmail.com