



# Department of Psychology

UNIVERSITY OF CENTRAL FLORIDA



# Fun facts!

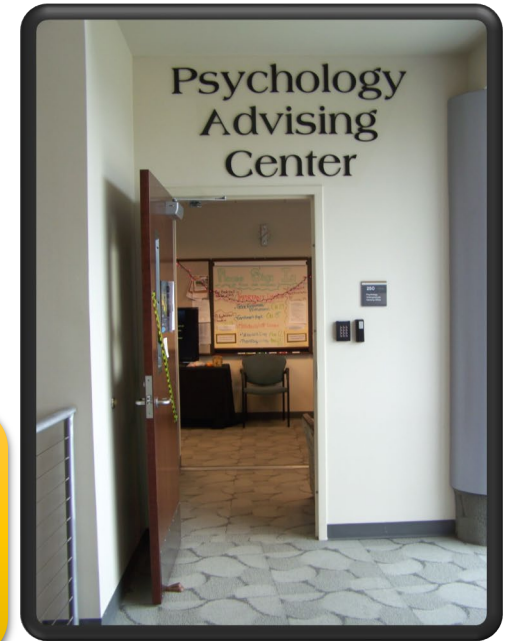


- **Psychology** is the largest major at UCF! Over 4,800 students!
- We have the most faculty in our department than other psychology departments in the U.S.
  - Our faculty do various research related to trauma, children/families, cognition, memory, attention, media, work stress, health, and teams with organizations like the military, NASA, and so much more!



- What is Psychology Advising and how is this different from my other advisors at UCF?
  - Psychology major, minor, or Behavioral Forensic Certificate
  - To meet with an advisor:
    - 1) Walk in to PSY 250:  
M-Th 9am-4pm, F 9am-12pm
    - 2) Email [Psychadvising@ucf.edu](mailto:Psychadvising@ucf.edu)

[sciences.ucf.edu/psychology/undergraduate-advising/](https://sciences.ucf.edu/psychology/undergraduate-advising/)



**Ms. Karen Cox, MA**  
Director



**Ms. Janette Daeschler**  
Administrative Assistant



# Other campus resources

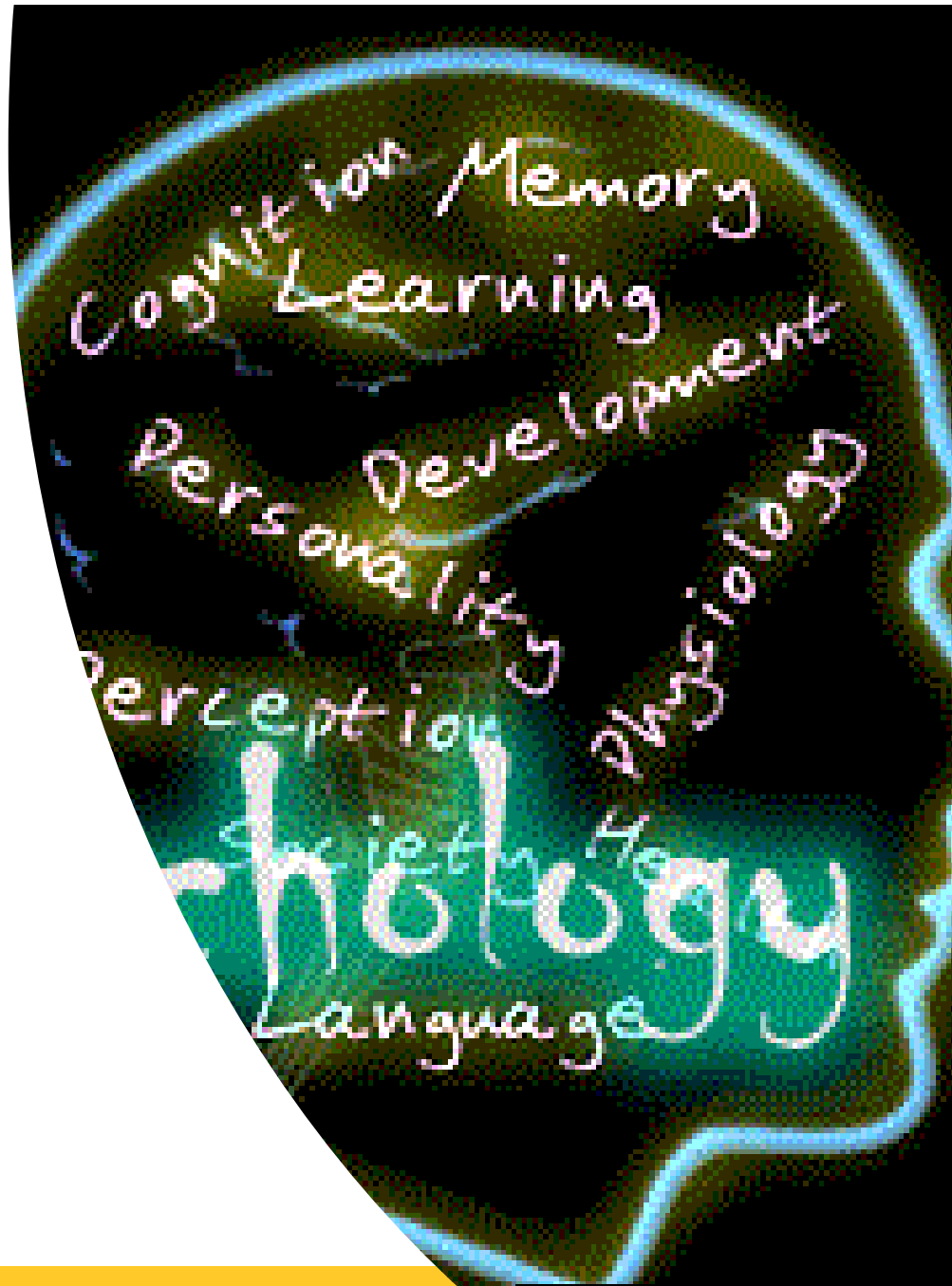
- Questions about your classes/grade/assignments or Want to get your PhD?
  - **Talk with your professors!**  
<https://sciences.ucf.edu/psychology/people/>
- Need to talk with someone or want to be a therapist? **UCF Counseling and Psychological Services**  
<https://caps.sdes.ucf.edu/>
- Questions about Pre-Health or Pre-Law field? **Office of Pre-Health Pre-Law Advising (PHPL)**
  - Pre-Med (Psychiatry), OT, PT, Dentistry, Veterinarian, etc/ Law School  
<https://academicsuccess.ucf.edu/phpladvising/>
- Veteran or use military benefits? **Office of Military and Veteran Student Success**
  - <https://varc.sdes.ucf.edu/>
- Need accommodations due to disability?
  - **Student Accessibility Services** <https://sas.sdes.ucf.edu/>
- **Transient: Taking a class at another school?**  
[FloridaShines.org](https://floridashines.org)

# What is psychology?

---

- Scientific study of the human mind and its functions, especially those affecting behavior in a given context.

Ψ



40% alumni  
pursue psych,  
the other 60% do  
careers outside  
of psychology!

## Careers in Psychology

recreation Rehabilitation  
organizer Customer management  
Warehouse youth  
outreach Advertising manager  
Community fundraising Case Activity agent Personnel  
Juvenile  
Law Historical  
Work compiler care staff Statistical College Film Office Marketing  
campaign Alcohol/drug Technical Lobbying Group parent minister  
researcher relations Life Intelligence services  
Career advisor Audience claims/underwriter Park Financial  
Store specialist Parole Hospital Foster Gerontology Claims Housing/student  
instructor Child patient health probation trainee Airline analyst  
Program Mental Volunteer Occupational Loan  
Human Home research owner writer service  
aide planning Public Employee Residential  
Social coordinator worker  
Insurance Laboratory clerk Newspaper Force Media

WordItOut

[https://sciences.ucf.edu/psychology/  
undergraduate-advising/](https://sciences.ucf.edu/psychology/undergraduate-advising/)

# Get involved!

## • Student Organizations:

- Psychological Society,
- Psi Chi Honor Society,
- Multicultural Psychological Student Association (MPSA),
- Student Professionals for I/O Psych (SPIOP)
- Active Minds
- Neuroscience Alliance
- & More



# Gain Relevant Experience:

- **Research Assistant** (need at least 1 year to apply for I/O or doctoral programs),
- Teaching Assistant,
- Internship,
- Volunteer,
- Part-time/Full-time work



<-Find jobs  
and  
internships  
with  
handshake!!

# To earn a Bachelors Degree in Psychology....

- Need to complete a total of **120** credit hours
- **42** of those hours need to be upper level (3000 and higher)
- 30 of last 39 with UCF only
- 21 hours from UCF Psychology
- You must earn at **least a 2.0/“C” or higher** to count for the psychology major requirement
  - **C- Waiver (waive one Psychology Req)**
  - Email [Karen.Cox@ucf.edu](mailto:Karen.Cox@ucf.edu)

Complete as  
soon as  
possible!!

# 1. UCF General Education Program (GEP)

- Complete if transferring with AA from public college in Florida
- If not, **COSAS** can advise you on the 36 credit hour requirement
- **UCF Academic Services** will evaluate credits transferring to possibly count towards those requirements

[www.academicsservices.ucf.edu/transfer-credit/](http://www.academicsservices.ucf.edu/transfer-credit/)

## 2. College Level Foreign Language Graduation Requirement

Complete as  
soon as  
possible!!

- You must show **proficiency** in a foreign language at the **college level** by:
  - Passing elementary level 2 of a language or higher OR
  - Passing second level of a test with CLEP or FLATS test @ the [University Testing Center](#)
- Languages UCF offers:
  - Modern Language Dept: Spanish, French, German, Italian, Portuguese, Haitian, Russian, Japanese, Korean, Chinese, Arabic....
  - Other languages: Hebrew and American Sign Language

# 3. Common Program Prerequisites/ 3. Core Reqs. Basic Level

Complete as  
soon as  
possible!!

- **PSY 2012 General Psychology**
- **Biology:**
  - BSC 2010C Biology I
  - or BSC 1005 Principles of Biology
- **Statistics:**
  - STA 2014C Principles of Statistics
  - or STA 2023 Statistical Methods I
    - PR: College Algebra or Finite Math

# 4. Psychology B.S. Core Requirements: Advanced Level

<del>PSY</del> 3024	Psychology: Career Readiness I	2 hrs
PSY 3074	Psychology: Career Readiness II	2 hrs
<del>PSY</del> 3204C	Statistical Methods in Psychology	4 hrs
PSY 3213C	Research Methods in Psychology	4 hrs
PSB 3002	Physiological Psychology	3 hrs
PSY 4604	History and Systems of Psychology	3 hrs
SOP 3004	Social Psychology	3 hrs
<del>DEP</del> 2004	Developmental Psychology	3 hrs
EXP 3604	Cognitive Psychology	3 hrs
PSY 4049	Psychology Capstone	2 hrs

PSY 3024 in first semester  
PSY 3074 in second semester  
S/U graded doesn't affect GPA  
2 credits, online only

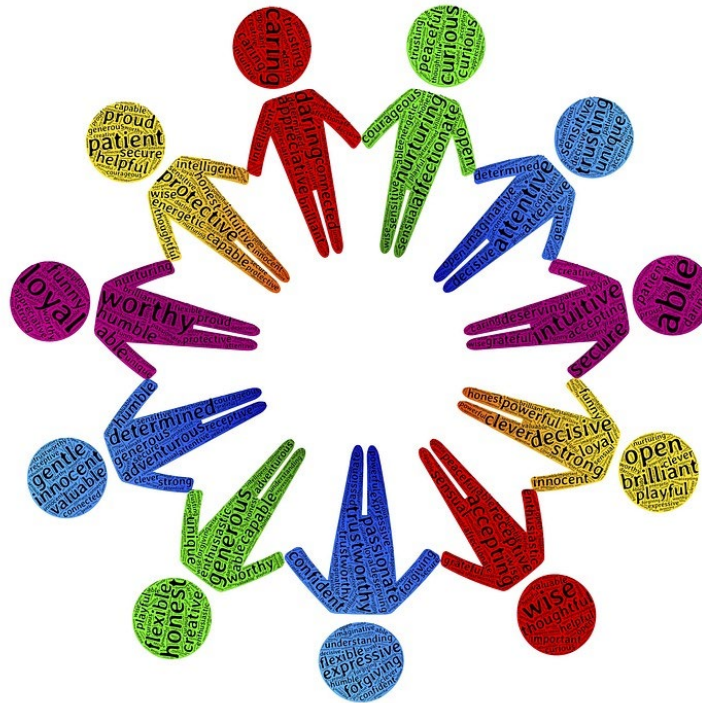
Take Statistics in order:  
First-STA 2023/2014C  
Second- PSY 3204C  
Third- PSY 3213C

PSY 4049 in LAST semester  
S/U graded doesn't affect  
GPA  
2 credits, online only



## 5. Diversity Electives (choose 1)

SOP 3742	Psychology of Women	3 hrs
SOP 3723	Cross Cultural Psychology	3 hrs
SOP 3724	Psychology of Prejudice	3 hrs
SOP 3784	Psychology of Diversity	3 hrs



## 6. Psychology Tracks: Choose a Track

If you took other psychology courses prior to UCF, they may transfer in here as a track elective! For example, Abnormal, Human Sexuality, & Forensic Psych can apply towards **clinical track** and positive psychology can apply towards the **general track**!



- Choose a track to focus your learning
- Each track requires 5 courses
- No matter which track, everyone is earning the same degree/major:
  - Bachelor of Science in Psychology

# Clinical Track (5 courses needed)

## Required:

CLP 3143 Psychopathology

## Select 4 of the following courses:

APK 3400 Sports Psychology

CLP 3004 Behavioral Self Control

CLP 3184 Women's Mental Health

CLP 3302 Clinical Psychology

CLP 3413 Contemporary Behavior Therapy

CLP 4314 Health Psychology

CLP 4134 Childhood Psychopathology

CLP 4390 Forensic Psychology

DEP 3202 Psychology of Exceptional Children

DEP 3464 Psychology of Aging

EAB 3703 Principles of Behavior Modification

EAB 3706 Behavior Modification Part 2

PCO 4203 Interviewing and Counseling

PPE 3003 Personality Theory and Research

PSB 3441 Psychobiological Aspects of Drugs

PSY 3302 Psychological Measurement

PSY 4215C Advanced Research Methods in Psychology

SOP 2772 Sexual Behavior

SOP 3751 Legal Aspects of Psychology



Study, diagnose, and  
treat mental,  
emotional, &  
behavioral disorders

Counseling/  
Social Work

# Industrial/Organizational Psychology (5 courses needed)

## Required:

INP 3004 Industrial Organizational Psychology



## Select 4 of the following courses:

CLP 4314 Health Psychology

EXP 3404 Basic Learning Processes

EXP 3304 Motivation

INP 3253 Performance Appraisal & Job Coaching

INP 4313 Organizational Psychology

PPE 3003 Personality Theory and Research

PSY 3302 Psychological Measurement

PSY 4215C Advanced Research Methods in Psychology

Understand  
productivity,  
management, &  
employee working  
styles to improve  
the quality of life  
in the workplace

MBA, HR?



UCF

# Human Factors Psychology (5 courses needed)

## Required:

EXP 3250 Principles of Human Factors Psychology

## Select 4 of the following courses:

EXP 3204 Sensation and Perception

EXP 4507 Advanced Human Memory and Cognition

PSB 4240 Neuropsychology

PSY 3630 Psychology of Human-Animal Interaction

PSY 4215C Advanced Research methods in Psychology

Apply human behavior to design and use of products, systems, tools, & environments for comfortable human use



UI/UX,  
Health Technology MA?

# Neuroscience (5 courses needed)

## Required:

PSB 4240 Neuropsychology (PR: PSB 3002 Physio Psych)

## Select 4 of the following courses:

CLP 4314 Health Psychology

EXP 3204 Sensation and Perception

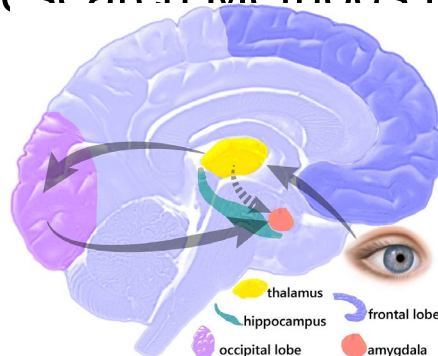
EXP 3304 Motivation

PSB 3441 Psychobiological Aspects of Drugs

PSB 3842 Sleep and Dreams

PSY 4215C Advanced Research Methods in Psychology

Understand how  
brain affects  
cognitive function  
and behavior



# Experimental (5 courses needed)

**Select 5 of the following courses**

EXP 3304 Motivation

EXP 3640 Psychology of Language

EXP 3404 Basic Learning Processes

EXP 4507 Advanced Human Memory and Cognition

EXP 3204 Sensation and Perception

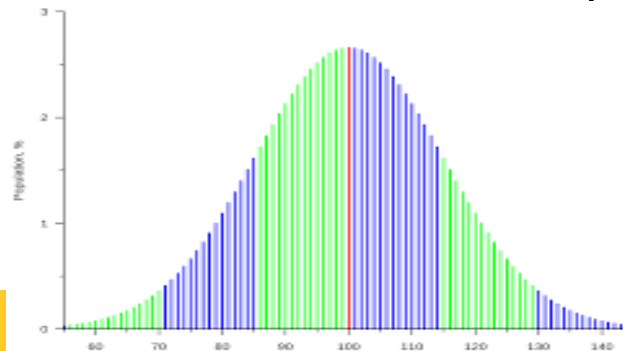
PSY 3302 Psychological Measurement

PSY 3320 Survey Methods in Psychology

PSY 3635 Science and Pseudoscience in Psychology

PSY 4215C Advanced Research Methods in Psychology

Focus on design,  
analysis, and  
dissemination of  
research through  
experimentation  
related to behavior



# General (5 courses needed)

Select **any** five (5) courses from those taught by the **Psychology** department

**NOTE:** The following courses will NOT fulfill this requirement.

~~INP 3141C Advanced Applied Psychology~~

~~INP 3951 Industrial/Organizational Field Work~~

~~PSY 3905 Directed Independent Study~~

~~PSY 4906 Directed Independent Study~~

~~PSY 4912 Directed Independent Research~~



## 7. Math/Science Electives (2 courses needed)

ANT 2511 The Human Species	CHM 2045C Chemistry Fundamentals I	PCB 3703C Human Physiology
ANT 3541 Bio behavioral Anthropology	CHM 2046 Chemistry Fundamentals II	PHY 2053C College Physics I
ANT3550C Primatology	EVR XXXX Any EVR prefix	PSC 1121 Physical Science
ANT 4516 Human Biological Diversity	HSA 4702 Health Sciences Research Methods	STA 4102 Computer Processing of Statistical Data
ANT 4586C Human Origins	HSC 3147 Introduction to Pharmacology	STA 4163 Statistical Methods II
BSC 2011C Biology II	MAC 2233 Concepts of Calculus	STA 4164 Statistical Methods III
BSC4312C Advanced Marine Biology	MCB XXXX Any MCB prefix course	ZOO XXXX Any Zoo Prefix course
CHM 1020 Concepts in Chemistry	PCB 3063 Genetics	

**GEP #11 (not AST 2002):**  
CHM 1020, PSC 1121,  
PHY 2020, etc will count



# FTIC: What should you take in first semester?

## Requirements to complete sooner:

- **GEP** General Education Program– connect with COSAS advising ([COSAS@ucf.edu](mailto:COSAS@ucf.edu)) about which GEP requirements you still need to complete. This is met if graduating AA from public college in Florida
- **College level foreign language:** need second level 2 (1121). If you only took 2 years in high school, you may want to start at level 1 (1120) before taking level 2 (1121).
- **Psychology program prerequisites:**
  - PSY 2012 General Psychology
  - DEP 2004 Developmental Psychology (PR PSY 2012)
  - GEP #8 STA 2023 or 2014 Statistics
  - GEP #12 Biology BSC 1005 or BSC 2010c

# Transfer: Recommended Schedule

## Spring (12 credits full time for financial aid)

- Lang 1 1120, ASL 2140
- PSY 3024 career I
- PSY 3204c Stat in Psych (PR STA)
- DEP 2004, SOP 3004, PSB 3002, EXP 3604, diversity (SOP 3723, 3724, 3742, or 3784), track elective, science elective, OR minor/certificate/internship

### Alternative courses:

GEP requirements if no AA: GEP #3 like COM1000, 4 Gordon Rule Writing (GRW), 5, 6 (GRW), 10, 11 (not AST 2002)  
Psych requirements: college level language, DEP 2004, Biology, Statistics, SOP 3004, PSB 3002, EXP 3604, track electives, diversity elective, science elective, or course from minor/certificate

### Language courses:

Level 1: 1120 or ASL 2140  
Level 2: 1121 or ASL 2150  
Prefixes: SPN, FRE, GER, ITA, POR, KOR, JPN, HBR, HAI, CHI, ARA, RUS

Questions? Email [psychadvising@ucf.edu](mailto:psychadvising@ucf.edu)

# CHECKING OUT OF ORIENTATION



1. In a web browser, go to **bit.ly/ucfcheckout23**
2. Log in with your **UCF credentials**
3. Click on **Complete the Orientation Survey**
4. When the box expands, click on the “**Next →**” button
5. When a new page opens, **click on the link at the top of the page** to get taken to the survey.
6. **Complete the survey in full.**
7. When done, you will receive a unique password. **Copy or write that password down.**
8. Go back to the other screen with the link to the survey (*should still have the tab open!*) and **put the password in the box.**
- ◆ 9. Click “**Save & Continue**”
- ◆ 10. You’re done! 😊



# QR Codes for

**Psychology  
Presentation:**

**Orientation Packet  
Handout:**